

DRAWING NUMBER  
51/31

DRAWING NUMBER

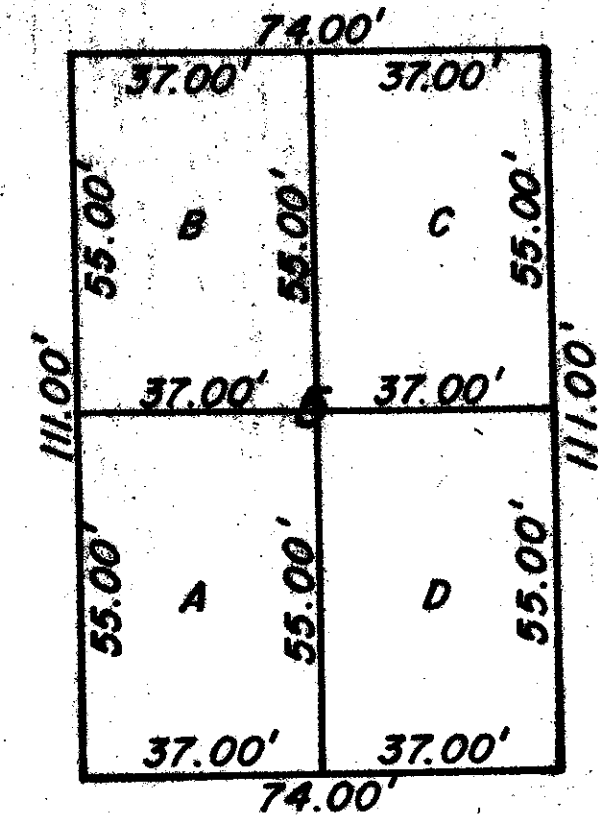
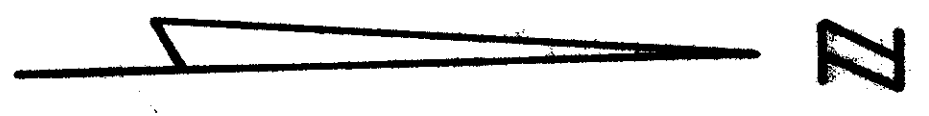
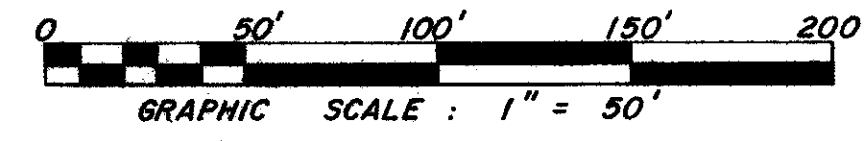
DRAWING NUMBER

DRAWING NUMBER

A PORTION OF A P.U.D.  
**LAKESIDE GREEN-PLAT NO. 5**  
SECTION 12, TOWNSHIP 43 SOUTH, RANGE 42 EAST  
PALM BEACH COUNTY, FLORIDA  
IN 2 SHEETS SHEET NO. 2  
FEBRUARY, 1985

51/31

STATE OF FLORIDA  
COUNTY OF PALM BEACH  
This Plat was filed for record at \_\_\_\_\_ M.  
this \_\_\_\_\_ day of \_\_\_\_\_  
19\_\_\_\_, and duly recorded in Plat Book No. \_\_\_\_\_  
on page \_\_\_\_\_  
JOHN B. DUNKLE, Clerk Circuit Court.  
By \_\_\_\_\_, D.C.



TYPICAL QUADRUPLEX LOT  
SCALE: 1" = 30'

CURVE TABLE

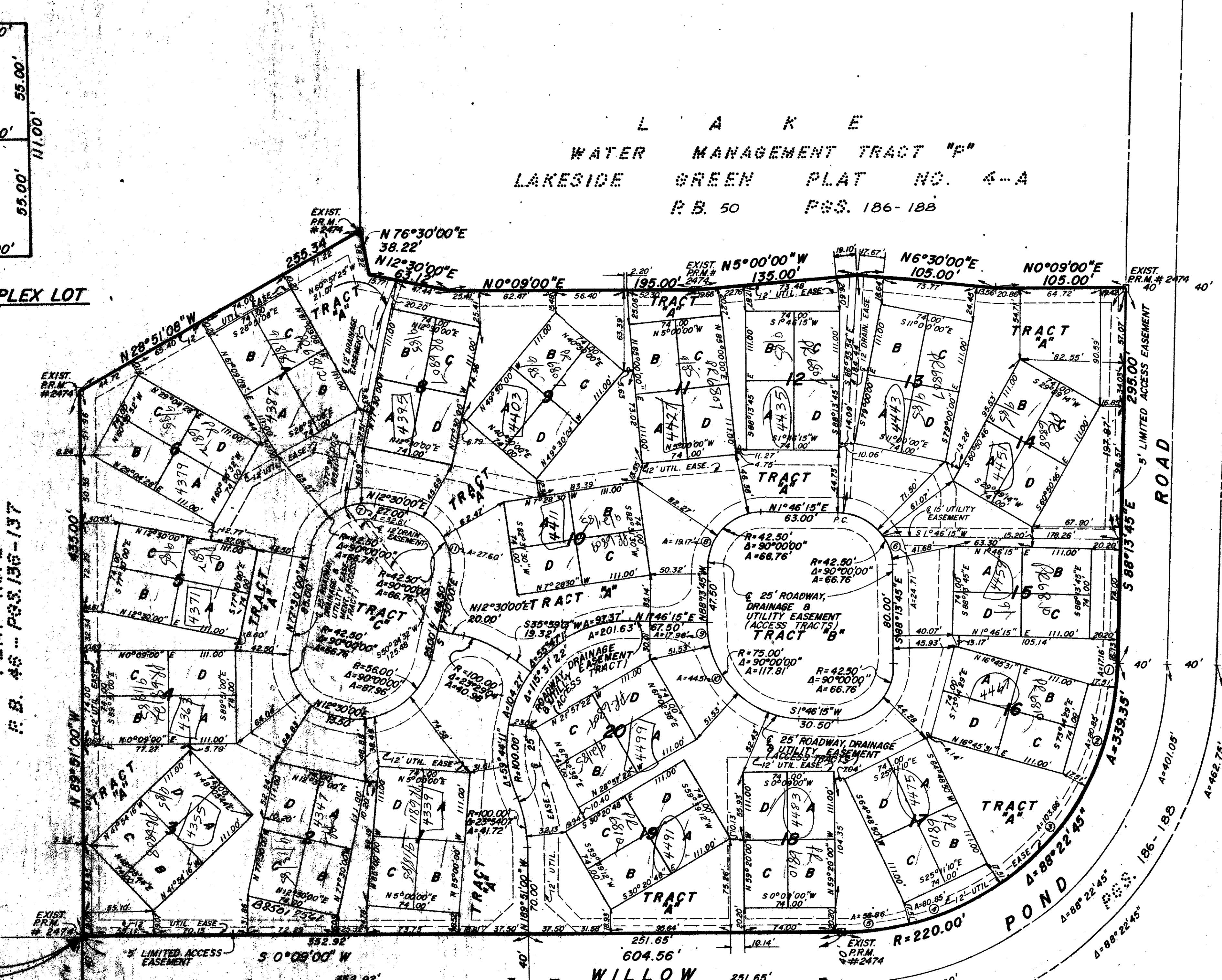
CURVE NO.	RADIUS	DELTA	ARC
1	220.00'	42°27'34"	17.12'
2	220.00'	2°03'24"	80.85'
3	220.00'	2°03'24"	103.68'
4	220.00'	2°03'24"	64.65'
5	220.00'	14°48'38"	56.36'
6	42.50'	23°18'49"	24.71'
7	42.50'	43°57'25"	32.61'
8	42.50'	25°50'14"	19.17'
9	75.00'	13°43'27"	17.96'
10	75.00'	34°00'20"	44.51'
11	42.50'	37°12'25"	27.60'

L A K E  
WATER MANAGEMENT TRACT "P"  
LAKESIDE GREEN PLAT NO. 4-A  
R.B. 50 P.S.S. 186-188

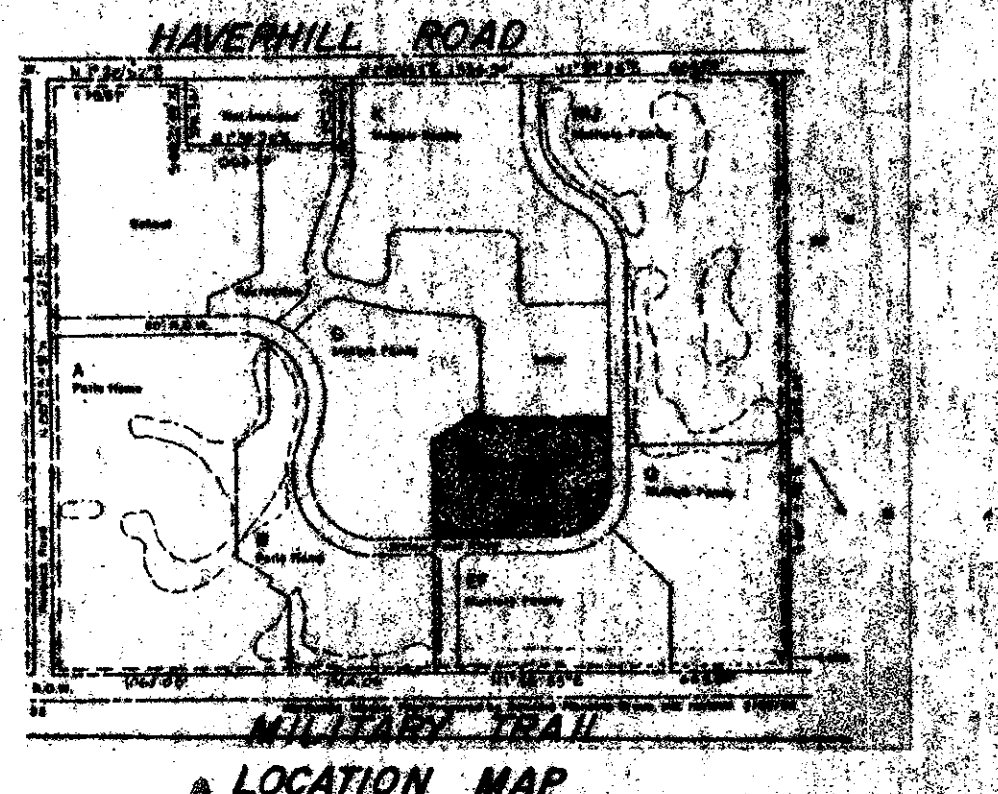
L A K E  
WATER MANAGEMENT TRACT "L"  
LAKESIDE GREEN PLAT NO. 4-B  
R.B. 50 P.S.S. 186-188

NOTES:  
ALL BUILDING TIES FROM REAR PROPERTY LINE OR ROAD R/W ARE SHOWN 90° TO LINE OR RADIAL TO R/W.  
ALL BUILDING TIES SHOWN WITHIN PARCEL MEASURED FROM ROADWAY EASEMENT ARE SHOWN 90° TO SAID CENTER LINE OR RADIAL TO CURVE.

LAKESIDE GREEN PLAT NO. 2  
R.B. 48 P.S.S. 136-137



12/13/43  
SUBDIVISION  
51  
PAGE 31  
BLOCK 30  
R.D.  
LAKESIDE GREEN  
NOT PLATTED



51/31 0265-306

THIS INSTRUMENT WAS PREPARED BY JOSEPH M. TUCKER IN THE OFFICES OF ROSSI AND MALAVASI ENGINEERS, INC., 1675 WEST PALM BEACH BLVD. WEST PALM BEACH, FLORIDA 33401. PHONE: 737-6546

ROSSI AND MALAVASI ENGINEERS, INC.  
WEST PALM BEACH, FLORIDA

A PORTION OF A P.U.D.  
**LAKESIDE GREEN-PLAT NO. 5**  
IN 2 SHEETS SHEET NO. 2

Date: FEBRUARY, 1985	Designed: R. MALAVASI	Scale: 1" = 50'
Approved: _____	Drawn: D. FERRARI	Check: _____